

# Non-Winter Restrictions Map

**Grower:** Gruber Livestock North

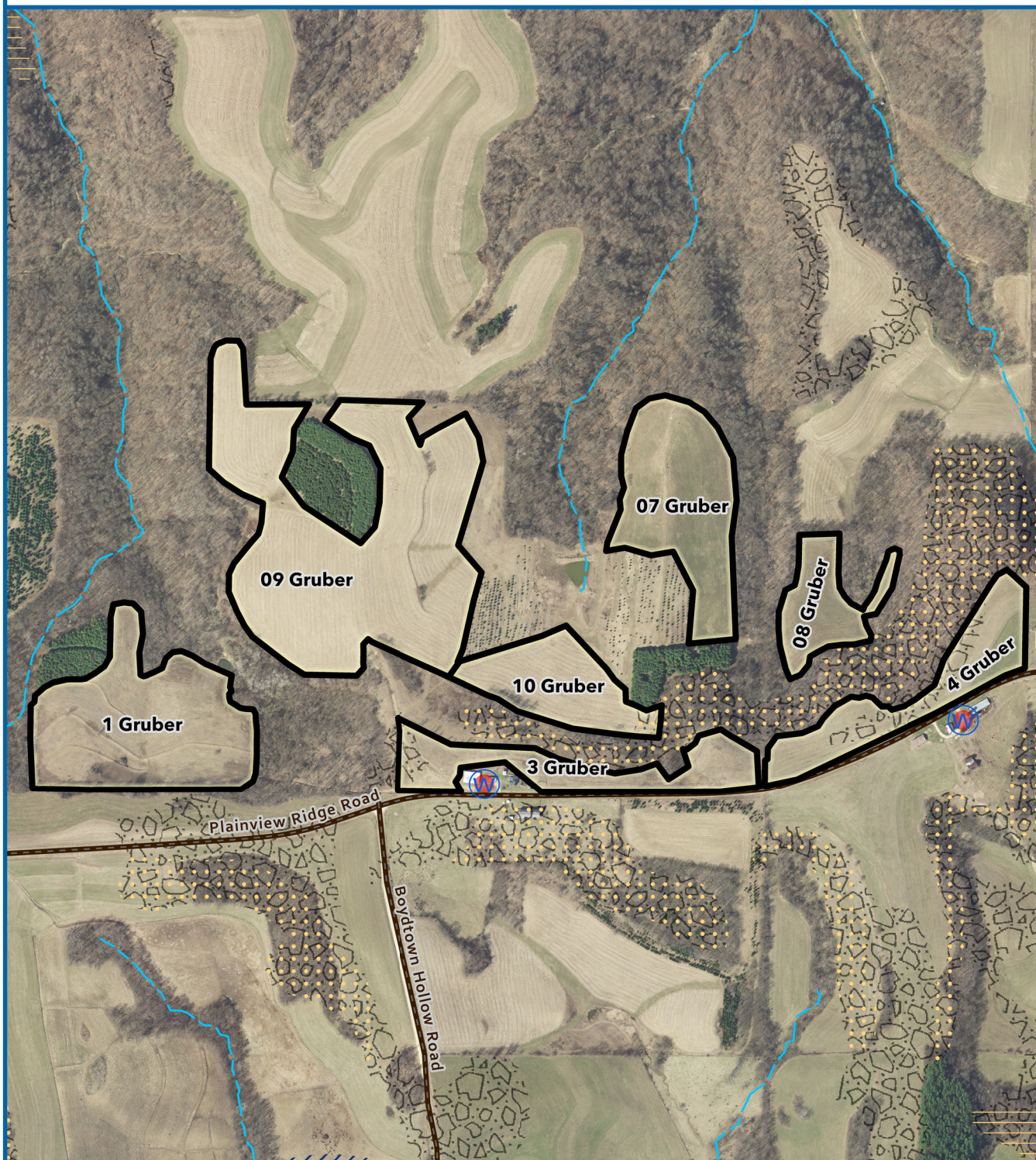
**Field(s):** Gruber 1, 3, 4, 7, 8, 9, 10

Crawford County, WI



**AgSource**  
LABORATORIES

0 250 500  
Feet



## Legend

Fields

Roads

Intermittent Stream

Private Well

No App.: Private Well Buffer 50 ft

SWQMA: Incorporate within 72 hours (see attachment)

N Restricted Soil (P): High Permeability: See Attachment

N Restricted Soil (R): Bedrock Within 20 in.: See Attachment

Bedrock <5 ft: See Attachment

Aerial Photo: WROC 2020  
Date Exported: 7/21/2025

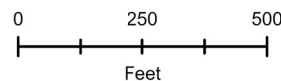


# Non-Winter Restrictions Map

Grower: Gruber Livestock North

Field(s): Gruber 14

Crawford County, WI



## Legend

Fields

Roads

Intermittent Stream

Private Well

No App.: Private Well Buffer 50 ft

SWQMA: Incorporate within 72 hours (see attachment)

N Restricted Soil (P): High Permeability: See Attachment

N Restricted Soil (R): Bedrock Within 20 in.: See Attachment

Bedrock <5 ft: See Attachment

Aerial Photo: WROC 2020  
Date Exported: 7/21/2025

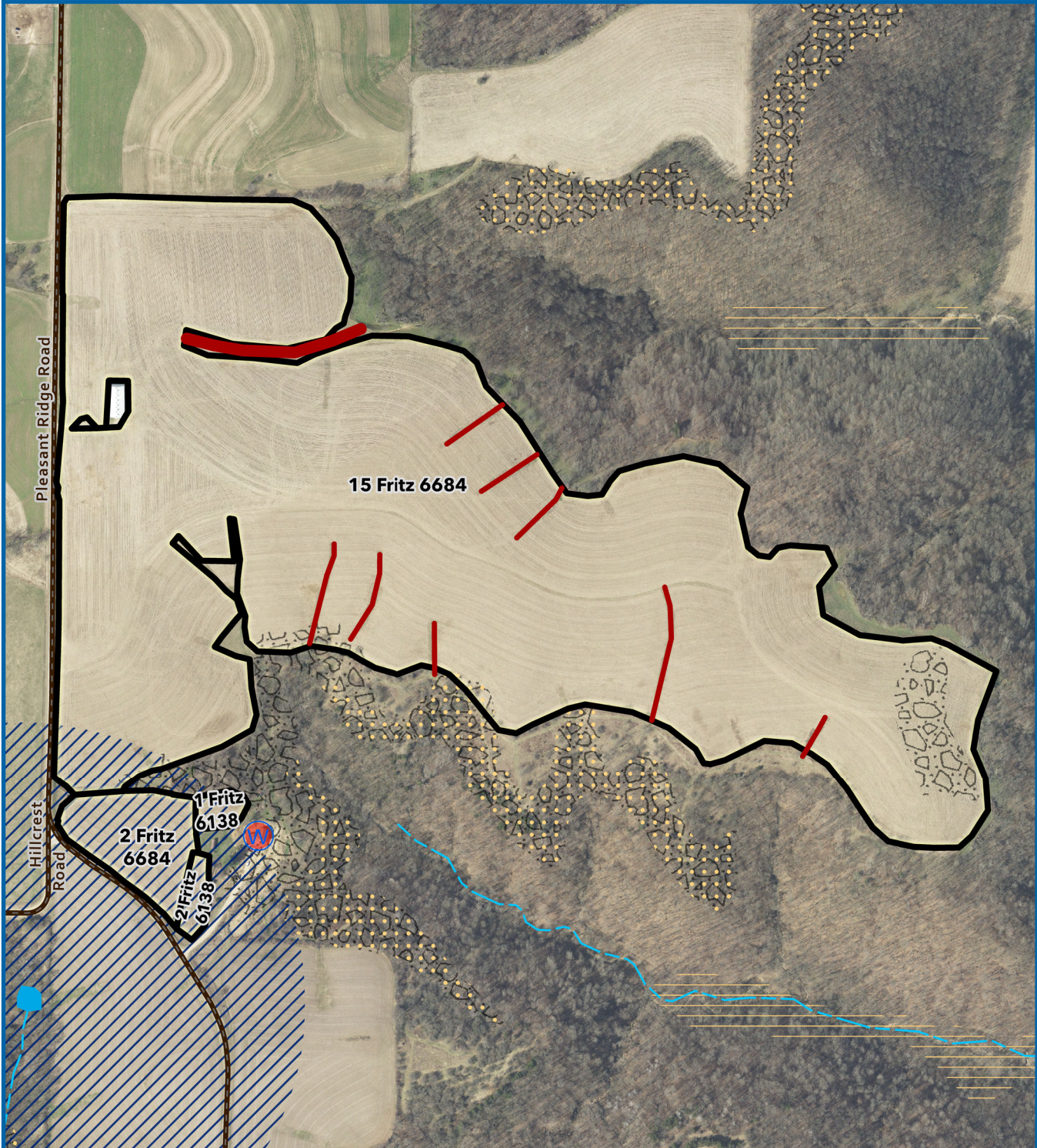
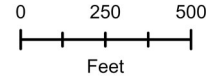


# Non-Winter Restrictions Map

Grower: Gruber Livestock North

Field(s): Fritz 1, 2, 15

Crawford County, WI



## Legend

Fields

Roads

Concentrated Flow Channel

Waterbodies

Intermittent Stream

Private Well

No App.: Private Well Buffer 50 ft

SWQMA: Incorporate within 72 hours (see attachment)

N Restricted Soil (P): High Permeability: See Attachment

N Restricted Soil (R): Bedrock Within 20 in.: See Attachment

Bedrock <5 ft: See Attachment

Aerial Photo: WROC 2020  
Date Exported: 7/21/2025